

A little bit about *And Where Do I Seek My Dolphin Of Wisdom*

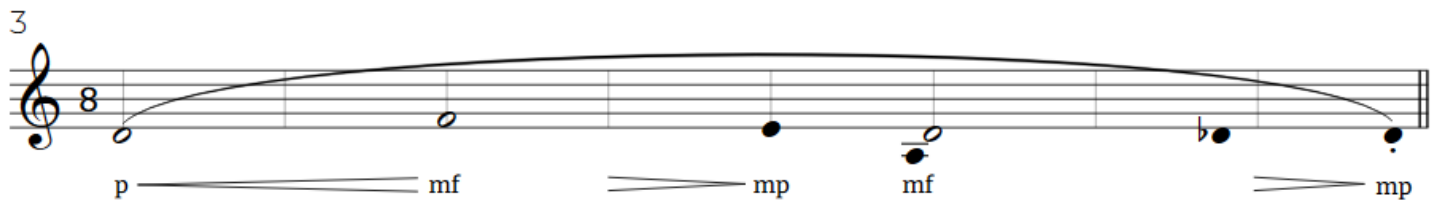
Thank you so much for taking the time to check out my piece! It is loosely based on concepts introduced in Ilona Selke's [Wisdom of the Dolphins](#). The book goes into detail about dolphin social dynamics, and how humanity can benefit from adopting certain dolphin behaviors. It's a truly fascinating book, and my core inspiration for the piece is this story interpreted as a fictional work. In a more literal fashion, rhythms and phrasing are loose transcriptions of footage of dolphins in the wild, and in a more whimsical fashion, I'm enchanted by the notion that there might be a wise dolphin out there for me with the ability to show me secrets to the universe. I wonder where I might find it. Will that ever happen? Only time will tell....

Accidentals



Accidentals carry through the entire phrase, but in the event that there's too much distance between multiple instances of an accidental, I include a courtesy. Sometimes accidentals have to be placed on top of the note head, either directly above or attached with a dashed line. If there isn't enough space otherwise; however, accidentals will be in their usual location whenever possible.

Form and Pacing



The goal of the notation is to illustrate somewhat of a sense of rhythmic freedom. Each system is its own phrase. The faint gray lines indicate individual pulses.

The speed of the pulse is variable within the range specified by the tempo marking. Pulses can change tempo from pulse to pulse, and can even change tempo within the same pulse. The goal is for rhythmic interpretation to be almost entirely flexible, with the only restraint being tempo range. The number on the left indicates the total number of pulses in the phrase.

If a phrase ends with a double bar, pause for at least 2 seconds before proceeding to the next phrase. Phrases without a double bar continue directly into the next system. They also share the same measure number with an additional letter to show continuation into the next system.

Rhythm

5 a little doubt

p < mf p < mf ff mf mp p

Detailed description: This musical notation is on a treble clef staff with a key signature of one flat and a 9/8 time signature. It begins with a half note G4, followed by a dotted quarter note G4, and then a series of eighth notes descending from G4 to B3. The dynamics are marked as p, mf, p, mf, ff, mf, mp, and p. There are slurs over the first two notes and the descending eighth notes. A bracket under the final two notes indicates an ending point.

There are two types of note heads in the piece: open and closed.

An open note head is sustained until another note interrupts it, or if it's marked with a bracket to indicate an ending point.

A closed note head will only sustain for a maximum of one beat if: not interrupted by another note, marked with an articulation (like a staccato), or marked with a bracket to indicate an ending point.

Dolphin noises

The bass clarinet will be responsible for dolphin noises exclusively. If you don't have access to a bass clarinet, feel free to interpret the dolphin parts on the B-flat or using alternative means, like electronics, or your own voice! It's also worth mentioning that the treble clef is replaced with a *dolphin* clef in these sections.

20a porpoise-like, wise
erratic vibrato, expressive

ff f mf f ff mf ff mf

Detailed description: This notation uses a 'dolphin clef' (a treble clef with a hook) and a 7/8 time signature. The top line features a wavy line representing vibrato. The notes are: a half note G4 (ff), a dotted quarter note G4 (f), a dotted quarter note G4 (mf), a dotted quarter note G4 (f), a dotted quarter note G4 (ff), a dotted quarter note G4 (mf), a dotted quarter note G4 (ff), and a dotted quarter note G4 (mf). There are slurs over the first two notes and the last two notes.

The top line indicates squealing in the high register. The pitches chosen aren't meant to be exact, but I imagine them being **near** the top of the range. There should be enough head room to scoop upwards. You can find reference material here: [YouTube Sound Of Dolphins dolphin calls](#)

21 flutter fast (leave room to decelerate)
clicky, percussive

decelerate

clicky, minimal pitch

mp ff mp p pp

Detailed description: This notation uses a 'dolphin clef' and a 7/8 time signature. The top line has a wavy line. The notes are: a half note G4 (mp), a dotted quarter note G4 (ff), a dotted quarter note G4 (mp), a dotted quarter note G4 (p), and a dotted quarter note G4 (pp). There are slurs over the first two notes and the last two notes. A dashed line above the notes indicates a deceleration.

The bottom line indicates low clicking. The sound should be mostly percussive, with minimal pitch. If there is any pitch, it should be near or at the bottom of the clarinet's range. I intentionally leave the instructions for clicking sections vague because there are multiple ways to achieve a suitable effect: fluttering, slap-tonguing, or even clicking your tongue against the roof of your mouth. Play expressively and with variety! You can find reference material here: [YouTube Dolphin Talking](#)

Expressive text

27a scattered

mp mf mp mf mp p mp mf f

Text at the beginning of the system is meant to guide emotional interpretation. Expressive text carries over into subsequent phrases until another instruction replaces it.

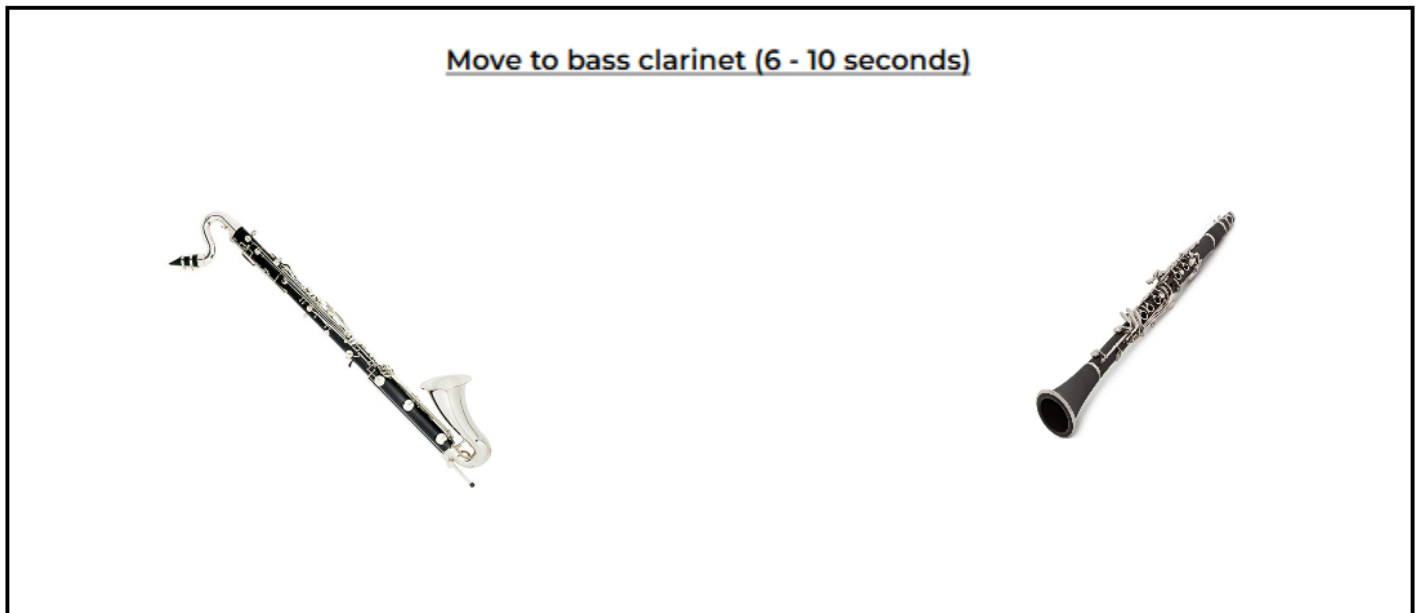
Articulations

9 more doubt

pp p mf ff mp

The only non-legato articulation used in the conventional clarinet writing is staccato. Staccato articulations should be short, punchy, and pointalistic. They should be an articulated contrast to the long tone.

Stage Positioning



Ideally, there should be two separate locations on the stage for each clarinet. It doesn't matter exactly where; however, there should be a move from one location to another between sections. If you are performing without a bass clarinet, the move should still take place.

Electronics & Projection

The electronics and projection can be found at

<https://forrestbalman.github.io/and-where-do-i-see-my-dolphin-of-wisdom/>.

The electronics and visuals are all using real time water level and current data from the NOAA's station at Monterey Bay. Upon loading the page, the electronics fetch the most recent tidal data from the station, which then influences the rate of incidental sounds, drone oscillation, and animation speed.

To start the electronics and visuals, press the start button on the page. For projection purposes, please run your browser in fullscreen (usually the F11 key). To stop the electronics, click the tile in the bottom right corner of the screen. It will trigger a 10 second fade out sequence, then the page will fade to black.

And Where Do I Seek My Dolphin Of Wisdom?

for Clarinets, Electronics, and Projection

Forrest Balman

Start the accompaniment, and allow it to play for ≈10 seconds before proceeding.

≈ 52 - 60
searching, timid

1
p — mf — n — mp

2
mf — p — mf — p — mp — p — mf_{sub}

3
p — mf — mp — mf — mp

4
mp — p — mp — mf — mp

5
p — mf — p — mf — ff — mf — mp — p
a little doubt

6
p — mf — n — mp
searching, timid

7
mp — f — mp — mf — n — mf — p

8 a little doubt

p mf mp pp

9 more doubt

pp p mf ff mp

10

p pp p mp mf f

11 less doubt

mp <mf <f ff f n

12 searching, timid

mf n mp n

13

mp p mp f p

14

f mp f p

15

mp f mp f

16 a little doubt

mp <f ff f mf ff mf

17 more doubt

mp p mf ff

18a

mf mp p ff

18b astonished, miraculous

n ff pp

19

p mf n mp

Move to bass clarinet (6 - 10 seconds)

20a porpoise-like, wise
erratic vibrato, expressive

ff f mf f ff mf ff mf

20b

ff f mf mp p pp

21 flutter fast (leave room to decelerate)
clicky, percussive

decelerate

clicky, minimal pitch

mp ff mp p pp

22

erratic vibrato, expressive

mf ff

Move to B \flat clarinet (6 - 10 seconds)

23 timid

p mf n mp

24a curiously

mp f mp p <mf <f mp mf ff

24b

f mf mp ff mp p f

25 timid

mf pp mf mp <mf mp n

26

p mf mp <f mf p

27a scattered

mp mf mp mf mp mp p mp mf f

27b

mp mf ff mp ff mp mf f

28 resolved

mp f mp f

29

p mf mp mf n

30

mp p mf p mp n

31

p mf n mp

32

pp mp n p

Move to bass clarinet (6 - 10 seconds)

34 porpoise-like, wise
erratic vibrato, expressive

ff f mf

35

ff mf mp pp p

clicky, minimal pitch

36

mp p f mf mp mf

37

mf ff

erratic vibrato, expressive

38

ff mf

39

mp pp

clicky, minimal pitch

Allow the electronics to play for 10 before fading them out.